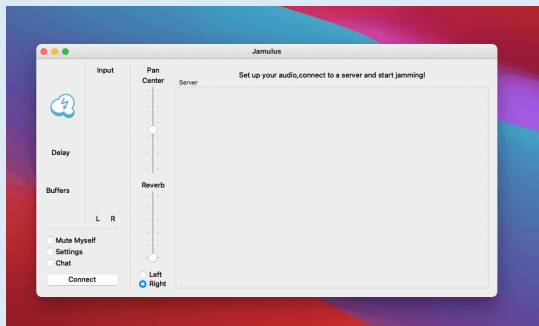


Connecting To Your Virtual Rooms

Connecting to your virtual rooms is done completely within the Jamulus desktop client.

Step 1

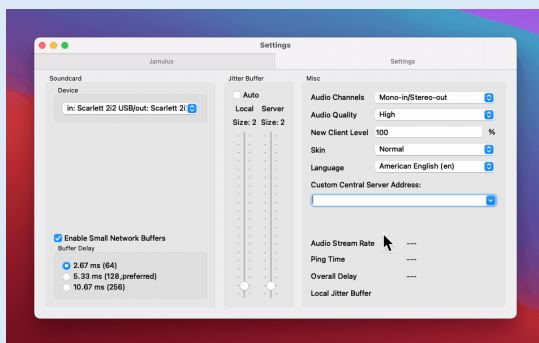
Open the Jamulus desktop client and click 'Settings'.



Click to enlarge

Step 2

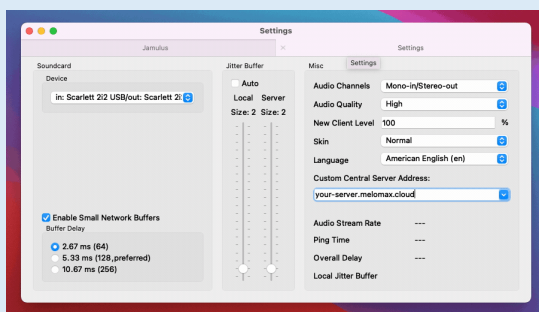
Enter your server's URL or IP address in the 'Custom Central Server Address' Field.



Click to enlarge

Step 3

Navigate back to the main Jamulus mixer screen, and click 'Connect'.



Click to enlarge

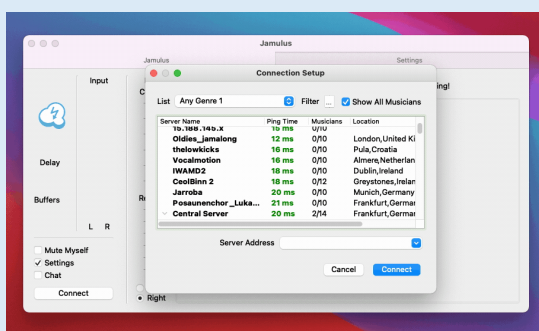
Step 4

In the connection pop up, select 'List' and choose 'Custom' from the drop down.

Your rooms should now appear in the list.

Select the room you wish to join and click connect.

TIP: The 'Main Room' is a system generated room that represents the central server. This room cannot be edited or deleted.



Click to enlarge